

# Donny Drinker

Free

 162

Winter 2025

CAMRA Doncaster &  
District Branch



Hoppy  
Malty  
Nutty  
Bitter  
Toasty  
Citrusy  
Vinegary  
Chocolatey

## The Taste of Beer

Find out what the different beer types should taste like. What should it not taste like.

## Pubs, Clubs & Brewery News

All our latest information

## Darleys Brewery

A brief look at the history of Darleys Brewery in Thorne

## 50<sup>th</sup> Anniversary

A final look at the last 50 Years of the branch with a focus on Donny Drinker, our socials and charity fund raising

## Whatpub replacement

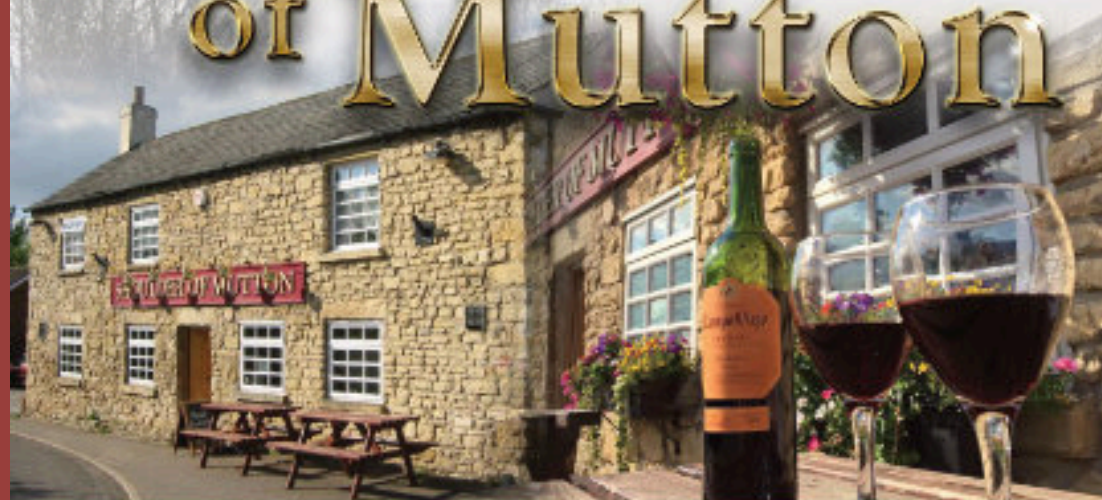
Whatpub, CAMRA's pub and club database has moved on to the CAMRA website

[doncaster.camra.org.uk](http://doncaster.camra.org.uk)



A warm welcome awaits you at

# The Shoulder of Mutton



Main Street, Kirk Smeaton Tel. 01977 620348

Serving real ales from Black Sheep and rotating guest beers

In the Good Beer Guide

Open Fires and Friendly Atmosphere

A Traditional Community Pub in an attractive Village Location

Quiz Night Every Tuesday from 8.30 pm

Large Beer Garden and Parking Area

Very Popular with Walkers



CAMRA PUB OF THE SEASON 2016

OPEN FROM 12:00 EVERYDAY

## Editorial

According to some press reports our government is considering a change to the law with regards to the level of alcohol you can drink before it is unsafe to drive. The current acceptable level for alcohol is 35 ug/100ml (breath) or 80 ug/100ml (blood). There are only about 3 countries that operate at this level. The proposal is to reduce this to 22 ug per 100ml (breath) or 50 ug per 100ml (blood). This is equivalent to the highest level allowed in Europe.

A research paper by Romano, Torres-Saavedra, Voas and Lacey (2014) indicated that reducing to this level would make it six times less likely that a person would be involved in a fatal crash.

From a safety point of view, it is difficult to argue against this change but the impact on the pub and brewery trade is likely to be very significant. The experts say that it is difficult to indicate what will be the safe limit to drink under this proposal. As with all alcoholic drinks it depends on the strength and quantity drunk. Other factors to take into account include weight, body fat, the sex of the person and whether it has been drunk with a meal. Some suggest that just one pint of beer could take a person over the limit.

So, what could the pub and brewery trade do to keep patrons coming through the door? Obviously, the current trend towards low alcohol beers could rapidly increase. We have yet to see if this will have a significant impact on taste. Drinkers in search of higher alcohol beers will have to frequent their 'locals' more often or use public transport. This could lead to fewer choices of higher alcohol beers as consumption reduces, or these beers only being bought at supermarkets and drunk at home. At worse this could lead to the end of real ale. Local transport options would have to improve beyond levels never seen before, particularly for village pubs in remote areas and the transport would probably need to be heavily subsidised. This could be wishful thinking!

Legislation is likely to be put before Parliament next year with implementation probably in early 2027. It's a shame drivers could not have been more responsible with the current drink/drive limit and this change may not have been necessary.

## Apologies

We appreciate all the work our volunteers do to make each issue of Donny Drinker possible. I made an incorrect attribution in DD 161 for the Pub of the Season article for the Hilltop at Conisbrough. The author was Celia Sawbridge.

## Winter 2025

### Editor/Advertising

Steve Pynegar  
donnydrinker@doncaster.camra.org.uk

### Pub/Brewery News

tellusyournews@doncaster.camra.org.uk

### Branch Chairman

Ian Jones  
chairman@doncaster.camra.org.uk

### Pubs Officer

Steve Last  
pubsofficer@doncaster.camra.org.uk

### Membership Secretary

Karl Hadfield  
membership@doncaster.camra.org.uk

### Social Secretary

Caroline Joyce  
eventssec@doncaster.camra.org.uk

### Secretary

Dave Bartley  
secretary@doncaster.camra.org.uk

### Branch Website

www.doncaster.camra.org.uk

### Advertising Rates

Full page	£100
Half page	£80

10% discount with pre-order and payment for 4 issues.

Views expressed in this magazine are not necessarily those of CAMRA at national, regional or branch level.

Donny Drinker is © CAMRA Ltd

### To report trading standards issues:

Phone: 03454040506  
Email: citizensadvice.org.uk



# Hallcross BEER FESTIVAL



*Overheulence*

*Gluglust*

*Carvys*

*Malice*

*Foamication*

*Lagerthargy*

*Stoutfacing*

# seveh

*Thirst. Gluttony. Hops.*

## OVER 25 REAL ALES

FRI 6TH FEB - SUN 8TH FEB 12PM-11PM

CLASSIC BEER FESTIVAL 7 - FREE ENTRY

32-34 Hallgate, Doncaster, DN1 3NL

## CONTENTS

6	Winter Pubs of the Season
8	CAMRA's Regional Pubs Winners
8	Good Beer Guide 2026
9	Chairman's Notes
13	Pubs, Clubs and Brewery News
16	News from CAMRA
22	Donny Dozen Part 4
26	War of Roses Beer Festival
28	Beer Tastes
32	Darleys Brewery
33	Spotlight on Carpenter's Arms
34	Final 50 <sup>th</sup> Anniversary Review
36	CAMRA's Pub Database
37	Branch Presentations
38	Social Diary



### Donny Drinker By Post

We can deliver Donny Drinker to your home. Just send 4 second class stamps with your name and address and we will post the next 4 editions to you.

Please state the issue you want posted to you to begin your subscription.

Send them to:  
Donny Drinker Subscriptions  
15 Newstead Road  
Doncaster DN5 9JS

## Doncaster Pub of the Season - Three Horse Shoes (Bentley Town End)

Ian Jones

The Doncaster CAMRA Winter Pub of the Season Award has been won by the Three Horse Shoes, Bentley Town End. A very worthwhile winner indeed and a pub with a long history!

Any trace of the original building and its associated stables has disappeared, however, as it was demolished and rebuilt in its current form in 1914. Back in the day, drinkers had to be careful when leaving as the road was aligned differently then and 'silent killers' or 'trackless trams' (trolleybuses to the uninitiated) on the Bentley service ran silently past the front of the pub. As if lying in wait for those who 'carelessly' slipped off the kerb after having one too many!

The area has seen many changes since then. In those days, the 'Shoes' was a thriving community pub selling Wards Sheffield Best Bitter. Housing, both behind the pub and in nearby Marshgate, provided a catchment area for its clientele. There was also a cinema, making it the ideal venue to pop into after a trip to the 'flicks'! Going further back, there were actually four pubs serving the area either side of the river. Readers will probably still be aware of the Toby Jug, which sat directly opposite on the south bank, but who can remember the Bridge Hotel and the George and Dragon?

Sadly, all that has now gone, leaving the Three Horse Shoes to fend for itself and it's great to see that the pub has survived the demolition that has gone on around it.

Like most of us, I'm afraid I've been guilty of admiring this pub from afar, usually as I drive past on some errand or other, or from the window of the bus as I travel into the city. It's quite an attractive building, with its twin bay-windowed frontage and leaded glass with stained panels. Its heritage is still apparent as it still clearly shows its former Wards ownership on the gable end of the building.

I recently managed to visit this pub as I'd heard so much about it from fellow CAMRA members who had ventured over the North Bridge, and was very glad I did. The interior has retained many of its



original features as a multi-roomed traditional pub. It has a 'L-shaped' reception/main bar area as you walk in, a lounge and separate bar as you might expect from a pub of this type, but also a rare thing nowadays, a snug with a traditional fireplace and hearth.

There are two, sometimes three cask ales on hand-pull. They're usually from Stancill but sometimes from other independent breweries. Beers from Abbeydale, Black Sheep and Salopian have all featured on the bar in the last few months.

In this financial clime I think it's a brave move to take on a business such this (ie: a Doncaster area pub 'north of the river' in with limited footfall and little passing trade) and licensee Erica Waines has done a great job in re-establishing the Three Horse Shoes and putting it back on the real ale map. The beers are kept by Erica herself and are always in tip-top condition, which has earned the pub a place in CAMRA's flagship publication, the Good Beer Guide.

The Pub of the Season Award is the branch's way of recognising a pub, or club, for the consistency and quality of the traditional real ale it sells. It is the reason members nominated the Three Horse Shoes for this prestigious award which it won by beating of some stiff opposition during a close-run vote. Why not join us on Saturday the 31<sup>st</sup> January at 6.30pm, when Erica will be presented with her well-deserved award.

We hope to see you there.

## District Pub of the Season - Jenny Wren (Beal)

Steve Pynegar

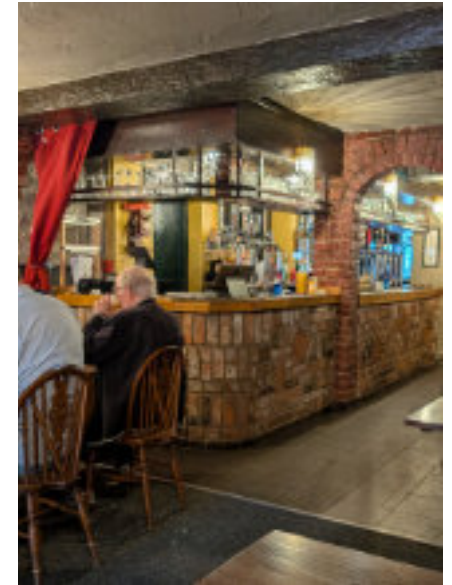


Ian Collins, the landlord, has worked at the Jenny Wren since 1993. He describes his pub as being quirky and there is good reason for this. It's a very traditionally designed pub and a shrine to the Yorkshire dialect all in one. Decorating the walls are signs with sayings in 'proper Yorkshire'. I will not give examples as they are best seen by visiting the pub. We have the chef to thank for them and long may they remain there. One room is full of mirrors for the fashion conscious drinkers. There is ample car parking to the rear and sides of the pub.

There is an interesting front bar tap room preserved in original condition for over 50 years. Altogether, there are three rooms of varying sizes from a small snug to a large main bar. At the bar you can usually find at least two changing real ales. On my last visit they had the very popular Ossett's Yorkshire Blond which was in excellent condition.

Beal was recorded as Bergale in the Domesday Book. It's name in old English means a nook of land in a river bend which correlates with its relationship to the river today.

The pub is on the very edge of our branch area, so many of its customers come from south, west and east parts of Yorkshire. There is no shortage of events as the pub provides occasional band nights, charity events and party nights for special seasonal events such as Christmas. There is a river close by



and the pub attracts a local canoeing club, canal boat owners and provides a base for fishing competitions.

This is one pub where the different interests of customers are catered for. Sky Sports is available in the tap room while the lounge area is available for those who just simply want to have a conversation over a few drinks. In the summer there is a grassed area with bench tables that doubles as a children's play area. In the winter there is the luxury of a real fire.

If all the above is not enough for you the pub also serves traditional pub meals. Lunches are available Wednesday to Sunday and evening meals Wednesday to Saturday.

We hope you will join Ian and his local staff on Saturday 21<sup>st</sup> February at 3pm. We have organised a minibus to take some members there. It's the first time they have won this award and they deserve all the support they can get.

CAMRA has revealed the 16 regional winners in its Pub of the Year 2025 competition

## East Anglia

[Blackfriars Tavern, Great Yarmouth](#)

## East Central

[Orange Tree, Baldock](#)

## East Midlands

[Burnt Pig, Ilkeston](#)

## Greater London

[Hope, Carshalton](#)

## Merseyside and Cheshire

[Cricketers, St Helens](#)

## North East

[Station House, Durham](#)

## North West

[Cumberland Inn, Alston](#)

## Northern Ireland

[Dog and Duck Inn, Lisbellaw](#)

## Scotland

[Volunteer Arms \(Staggs\), Musselburgh](#)

## South Central

[Bell Inn, Aldworth](#)

## South East

[Royston, Broadstairs](#)

## South West

[Hole in the Wall, Bodmin](#)

## Wales

[Rhos yr Hafod Inn, Llanon](#)

## West Central

[Pelican Inn, Gloucester](#)

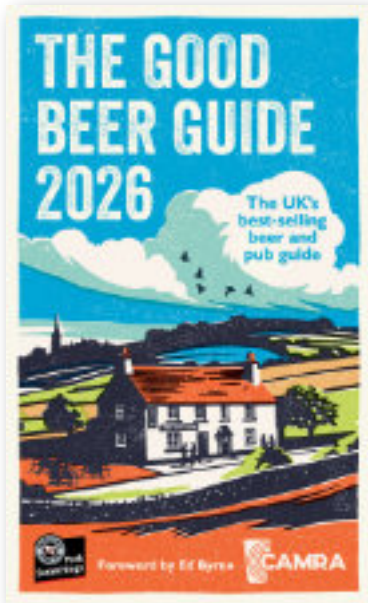
## West Midlands

[Tamworth Tap, Tamworth](#)

## Yorkshire

[Beer Engine, Skipton](#)

## Books



The UK's definitive guidebook to good pubs that serve real ale across the UK. Refreshed and updated for its 53rd edition, it is fully revised and features recommended pubs across the United Kingdom that serve the best real ale as well as a comprehensive listing of UK breweries.

This is the complete book for beer lovers and for anyone wanting to experience the UK's finest pubs. The Good Beer Guide is completely independent, with listings based entirely on evaluation by CAMRA members. The foreword for this year's guide has been penned by Ed Byrne, comedian and beer lover. Famous for his #preshowpints on social media, he has posted about the various bars and breweries he has sampled around the UK prior to his shows.

Order from CAMRA at : <https://shop1.camra.org.uk/>

£14.99

I was delighted to discover that the Doncaster CAMRA Winter Pub of the Season Award has been won by the Three Horse Shoes, Bentley Town End. I am familiar with this pub, located as it is on the north bank (Bentley side) of the River Don, as it is one of the few 'unspoilt' taverns remaining in the area and retains many original features. There's been an inn situated on this site where the old Great North Road crosses the Don since 1783 and it is said that inquests were once held here when a body was found in the river. Local folklore of the time, probably to pour scorn on the competence of the local constabulary (there were two forces who patrolled either side of the river), used to imply that the force making the gruesome find would push the poor unfortunate back out into the current, in the hope that they would wash up on the other side for the 'other lot' to have to deal with! Whilst growing up, I'd often hear my grandparents (on both sides – of the family, not the river) talk about this rather comedic scenario, usually when reminiscing about 'the good old days', so it must've been true!

Moving swiftly on from the past to the present, I was also pleased to learn from the editor of Donny Drinker himself, that this will be the 50th edition he has compiled. Believe you me, it's not easy filling up a publication such as this, searching for news that is relevant to the branch area, chasing late copy (usually from me) and pulling it all together in order to meet a print deadline.

Congratulations are certainly in order, so I'm sure you'll all side with me when I say well done Steve. This a great achievement and the magazine has gone from strength to strength with you at the helm.

By the time you read this the votes will be in, and



ready for counting, in response to our request to members to vote for the pubs and clubs they would like to see in CAMRA's flagship publication, the Good Beer Guide.

Members were also asked to cast their vote regarding several prestigious awards. These included the Pub of the Year awards, the Cider Pub of the Year awards, and the Club of the Year award. Five awards in total as some were split into Doncaster and Doncaster District. The results will be announced shortly via social media (and in the next edition of D.D.) whilst the successful G.B.G. entries will need to be surveyed before they can be made public.

Last but by no means least, we have a varied selection of social events, meetings, and award presentations lined up in the coming months. Please turn to the 'Branch Diary' section of this publication for more info. Non-members are always made welcome but please note that some of the minibus trips can fill up quickly and priority has to be given to members where necessary. Please contact the social secretary, whose e-mail can be found on page 3.

Don't forget that members attending their first meeting can claim a free pint of guest ale from me. Yes, that's right! Just show me your membership card and I'll get you one in, and CAMRA pays! This also includes those attending other branch events for the first time, such as socials and presentations. Traditional cider (where available) can be chosen as an alternative if preferred.

Why not come along and see what we get up to?

*Yan Jones:* Branch Chairman.

*On those Dark Winter Nights....*

Nothing better than a cosy pub with a real fire, a good pint, welcoming staff and the company of friends.

Pubs, Pints, People.

Give a gift membership to the beer lover in your life!

Beers are best shared with others. So, treat someone you like to a CAMRA gift membership and bring them along to the pubs and festivals that matter.

Set the membership to start on someone's special day!

They'll receive all the great discounts, benefits and vouchers you do, through the post.

Gift a membership today!  
[camra.org.uk/gift-membership](http://camra.org.uk/gift-membership)



JOIN TODAY



[www.doncasterbrewery.co.uk](http://www.doncasterbrewery.co.uk)

Weekly Quiz Nights Acoustic Music Sessions Spoken Word Events Drink Festivals Book Club



**DYSTOPIA BAR** 150+ CRAFT BOTTLES & CANS

6 REAL ALES INN CROWD DISCOUNT

6 TRADITIONAL CIDERS FREE WIFI

Donc CAMRA Pub of the Year  
 2016, 18, 19, 20, 22 & 2023  
 Donc CAMRA Cider Pub of the Year  
 2016, 18, 19, 20, 22, 23 & 2024  
 Yorkshire CAMRA Cider Pub of the Year  
 2016 - Runner Up  
 2018 - Winner  
 2019 - Runner Up  
 2023 - Highly Commended  
 2024 - Winner  
 Donc CAMRA Pub of the Season  
 Autumn 2024

/donnybrewery @DonnyBrewery

**7 YOUNG ST, DONCASTER DN1 3EL. MOB: 07921 970941**  
 OPENING HOURS - Mon: Closed | Tues to Thurs 5 - 11pm | Fri to Sat 12 - 11pm | Sun 12 - 5pm

# The 'Little' Plough

Doncaster's local pub in the town centre

- Four real ales - Acorn Barnsley Bitter, Ossett Brewery's White Rat and 2 changing ales.
- Sunday 8pm: Quiz-a-thon with DJ Cev to include quiz/music quiz/unlucky dip and Irish Bingo.
- Located on West Laith Gate, a couple of minutes walk from Doncaster railway station.
- Sports fans well catered for.
- Awarded on numerous occasions Doncaster CAMRA's Pub of the Season.
- Listed on CAMRA's National Inventory of Historic Pub Interiors.

## Opening Hours

Mon - Thu 11am - 11pm

Fri/Sat 11am - 11.30

Sun - 11am - 11.30

8 West Laith Gate

Doncaster DN1 1SF

Tel: 01302 738310

 @TheLittlePlough

 @Littleplough



**Editors Note:** We take every effort to make sure that everything is correct when this article goes to the printers. However, with the current volatile situation with pubs, clubs and breweries throughout the country the time between writing, printing and distributing may result in the situation changing. If your visit to a pub is important then check before you travel to make sure the situation has not changed.

### South Yorkshire

We have received reports that the **Gorilla Brewery** at Mexborough has ceased brewing. As far as we know the pub remains open.

**The Manor** at Old Denaby has a new management team. Kevin and Natalie Gaze have previously run the Pastures Lodge at Mexborough for 20 years. We understand that cask ale is available.

**The Terminus** at Conisbrough has been sold to new owners Kelly and Dave Wilcox. Kelly has been on the bar staff and so knows the place and the customers well. Previous owner Steve will be supporting them with regards to the beer so the pub should see little change.

**The White Hart**, an old pub in Thorne Market Place, has been sold at auction. This pub has not sold cask ale for quite a while.

The new managers at the **Newton Inn** in Sportborough have suddenly departed.

A member recently visited the pubs in Bawtry. **Bawtry's, Turnpike and White Hart** were all selling cask ales. The Turnpike was offering a cask ale discount on a Tuesday. Sadly the **Ship** is no longer selling cask ale.

After visiting Bawtry the same member went on to visit a couple of pubs in Tickhill. **The Royal Oak** was selling Rudgate Jorvik, Thornbridge Lord Marples and Timothy Taylor Boltmaker. At the **Traveller's Rest** he found Don Valley Brewery Best for You and Gongoozler and Wainwright Gold. There were quite a few diners in.



On a visit by a member the **Grazing Hart** at Micklebring was down to one handpump which was Abbeydale Moonshine.

A member spoke to Ian at the **Butchers Arms** in Braithwell, who has moved to the pub, having been at the Haynook in Maltby previously. There was no cask ale but he may get some in the future.

### City Centre

**The Railway** appears to be closed for the foreseeable future. There have been no Facebook posts and the pub looks as though it has been closed for several weeks.

A member has reported that three non-cask ale pubs in the city centre are up for sale. They are the **Slug & Lettuce, Yates** and the **Harewood**. It would appear that on one side of Hallgate the pubs are thriving while on the other they are not doing so well.

The Doncaster Free Press has reported that the **Draughtsman**, situated in the railway station, has had a visit from the well-known travel writer. He apparently left impressed with the pub. So he should have been.

### East Riding of Yorkshire

The **Three Horse Shoes** at West Butterwick, which closed several months ago, appears to be under offer, after Punch put the pub on the market.

## North Yorkshire

Peter, the landlord at the **Bay Horse** in Great Heck, has celebrated one year at the pub in August. He has done a good job at supporting the local community and during the year there has been a number of different events. You can expect to find beers from Old Mill Brewery here and some good food.

## Isle of Axholme

The **Cross Keys** at Wroot has been reported as being for sale. Real ale has been discontinued. It's a great shame as this has been an excellent village pub.



The **Carpenters Arms** at Westwoodside now features a third cask ale which was Wensleydale Gamekeeper in addition to Abbeydale Moonshine and Pig Barn Fool's Gold. Marc is doing a good job since he took over.

The **Crooked Billet** at Owston ferry had Don Valley Brewery Citra Session Pale Ale, Pig Barn Ferry Water and Brass Castle Bad Kitty.

At the **Doncaster Brewery Tap** Ian and Alison would like to thank everyone who attended their presentation night for Yorkshire Cider Pub of the Year and Autumn Pub of the Season. The ciders on the bar for the event were from Udders Orchard, so a very Yorkshire themed night.

Doncaster Brewery Beers currently available on hand pull on rotation are:  
Sand House 3.8% Blonde,  
Handsome Pat 4% Kentucky Common,  
First Aviation 5% Pale,  
Gravy is Finite 7.6% India Brown ale,  
Mucky Bucket 4.4% Black IPA,  
Unnamed Filly 4.2% Pale,  
St Leodegar 7.7% Imperial Porter.

## Brewery News

**Don Valley Brewery** is pleased to announce the appointment of Matt Haughan as the new Manager of its Brewery Tap in Sandtoft..

Contrary to what was reported in DD 161, Cody is still the brewery manager.

Matt brings energy and enthusiasm to both the brewery and taproom, getting hands-on with brewing, developing new sales opportunities, and welcoming guests with his trademark charisma. A passionate advocate for great beer—both local and from further afield—Matt is committed to championing independent breweries across the region.

In support of local business, the Brewery Tap now stocks a selection of cans and bottles from other nearby brewers. The venue also continues to grow in popularity, hosting a lively Open Mic Night on the second Wednesday of each month and Mick's Quiz on the last Wednesday, both starting at 7.30pm.

Meanwhile, Darryll Marsden has taken over as Manager of The **Cadeby Inn**, bringing a wealth of hospitality experience and knowledge to the role. The pub continues to serve a great range of conditioned cask ales, featuring regular lines such as Timothy Taylor's Landlord, Don Valley Brewery's Atomic Blonde, and a guest bitter typically sourced from respected local breweries including Nailmaker, Black Sheep, and Acorn.

At the **Wool Market Tap Bar**, Don Valley Brewery has recently completed improvement works to enhance the quality of its cask ales. Upgraded chiller systems have significantly improved beer conditioning—essential in a venue where the layout prevents the use of a traditional cellar.

Early feedback suggests a marked improvement in quality, and with four lines now pouring—bitter, blonde, stout, and IPA—it's well worth giving them a visit.

Latest news from the **Doncaster Brewery**. On the 18<sup>th</sup> October, Handsome Pat and Jess from Dreaming Creek Brewery, Richmond, Kentucky returned to Doncaster. As Pat has become a follower of the Rovers, he and Jess went to the Doncaster Rovers v Northampton match which sadly ended 1-2



On Sunday 19<sup>th</sup> Ian and Pat (see photo) brewed another collaboration beer (following on from Dreaming of Doncaster) and Pat will be brewing the same beer at Dreaming Creek Brewery when he gets back. The beer is called Ayeup Y'all and is a Hazy Juicy Pale ale using Pomona Yeast.

Pumpkin Porter was brewed and was available at the end of October.

If you would like to see Doncaster Brewery beer on the bar in your local, please mention it to the landlord and Doncaster Brewery will be happy to deliver. Sales email [robin@doncasterbrewery.co.uk](mailto:robin@doncasterbrewery.co.uk)

Send your pub, club and brewery news to;

[pubsofficer@doncaster.camra.org.uk](mailto:pubsofficer@doncaster.camra.org.uk)



**The Royal Hotel**  
West End Road, Norton DN6 9DH  
01302 702950  
Food (Tuesday to Sunday)  
Family/dog friendly  
Hand-pulled Beers  
Beer Garden  
Live Music  
Sports TV



**MERRY XMAS AND A HAPPY NEW YEAR TO ALL OUR READERS**

## News from CAMRA

- ▶ CAMRA is relocating to their new office in Luton. Their new address is: Campaign for Real Ale Ltd, Unit 9 Finway, Dallow Road, Luton, LU1 1TR.
- ▶ The fight to win CAMRA's National Pub of the Year 2025 competition is hotting up with just four pubs remaining after months of rigorous judging. **Blackfriars Tavern, Great Yarmouth**: Awarded CAMRA's Cider and Perry Pub of the Year just weeks ago. **Pelican Inn, Gloucester**: family run traditional ale house dating back to 1679. **Tamworth Tap, Tamworth**: Twice winner of the National Pub of the Year (2022 and 2023). **Volunteer Arms (Staggs), Musselburgh**: A superb pub run by the same family since 1858 with a traditional bar and snug, wooden floors, wood panelling and mirrors from now-closed local breweries.
- ▶ Congratulations to **Five Kingdoms**, who won Champion Beer of Scotland 2025 with their fantastic beer Dark Storm.
- ▶ CAMRA's overall Cider and Perry Pub of the Year 2025 has been won by the **Blackfriars Tavern** in Great Yarmouth. The competition recognises the best pub or social club that champions real cider and perry across the UK. Judges are looking for great atmosphere, décor, welcome, service, inclusivity, overall impression and, most importantly, quality cider and perry.
- ▶ CAMRA will not be holding either of their Great British Beer Festivals in 2026.
- ▶ New editions to their merchandise range, include bucket hats, baseball caps and tote bags are now on their website at [camra.or.uk](http://camra.or.uk). All members get 10% off the retail price with the code MEMBERSBREW10.

We specialise in supplying chemicals, disposables, catering equipment and janitorial supplies to:

- Bars
- Pubs
- Hotels
- Schools
- Care homes
- Restaurants

For prices or to visit the showroom ring  
Tracey  
07762 666356  
[sales@diningdiva.co.uk](mailto:sales@diningdiva.co.uk)

Find us on  
Facebook

# THE LEOPARD DONCASTER

## REAL ALES

six regularly changing guest ales and ciders, from local & regional breweries, including our very own 1086 situated at cusworth hall.

## CRAFT ALES

wide range of craft ales, including salt-jute & blue moon on draught & a wide selection of crafted bottles.

## LIVE MUSIC

showcasing some of the best up-and-coming bands and performers. visit our website to see what's on.

## LIVE SPORTS

watch all the action live on the big screen at the leopard. sky sports & bt sports.

## FOOD SERVED DAILY

including small plates, pizza and pub classics.

scan the qr code to view our food & drinks menu



**SAVE 5%**  
WHEN YOU ORDER  
ON OUR APP



Horse & Groom  
Pub & Restaurant



Nutwell lane, Armthorpe  
01302 831658

## Homecooked food served daily

Mon to Thurs: 12pm - 8pm

Friday/Saturday: 12 - 9pm

Sunday Lunch 12 - 5:30pm

Catering for functions available



Thursday nights

sky sports

TNT SPORTS

RACING UK



Facebook: Horse & Groom - Nutwell lane

Instagram: Horse\_and\_groom-Armthorpe

# Branch Area Real Ale Pubs and Clubs

**Adwick upon Deame**  
 Manvers Arms  
**Airmyn**  
 Percy Arms  
**Arksey**  
 The Plough **GW**  
**Armthorpe**  
 Horse & Groom **GL**  
**Auckley**  
 Eagle & Child **WLG**  
**Austerfield**  
 Mayflower  
**Balby (Woodfield Pltn)**  
 Maple Tree  
**Barnburgh**  
 Barnburgh WM Club \* **LWG**  
 Coach and Horses **LDG**  
 The Crown Inn **WTGD**  
**Barnby Dun**  
 The Olive  
**Bawtry**  
 Turnpike **WG**  
 White Hart **WD**  
 Bar and Brasserie **CDL**  
**Beal**  
 Jenny Wren  
**Belton**  
 Crown  
 Wheatsheaf  
**Belle Vue**  
 Town Moor Golf Club **LW**  
**Bentley Town End**  
 Three Horseshoes **LG**  
**Bessacarr**  
 Flying Childers  
**Blaxton**  
 Blue Bell  
 Station

**Burghwallis**  
 The Burghwallis Pub  
**Cadeby**  
 Cadeby Pub & Restaurant  
**LDTG**  
**Clayton**  
 Clayton with Frickley Club  
**LWTGD**  
**Conisbrough**  
 Hilltop **LWG**  
 The Terminus **TWG**  
**Cusworth**  
 Old Brewhouse **GCLD**  
**Doncaster**  
 Black Bull **L**  
 Doncaster Brewery Tap  
**LCWGT**  
 Don Valley Tap **LTG**  
 Gate House **LW**  
 Hallcross  
 Leopard **DLTG**  
 Little Plough **L**  
 Marketplace Alehouse **LC**  
 Masons' Arms  
 Queen Crafthouse **C**  
 Red Lion **WDL**  
 Salutation **LC**  
 Social  
 The Draughtsman Alehouse  
 The Mallard **DT**  
 Town Field Sports Club  
 Tut 'n' Shive **DT**  
 White Swan **L**  
 Yates  
**Dome/Lakeside**  
 Beefeater Lakeside  
 Cheswold

**Edenthorpe**  
 Eden Arms **DG**  
**Eggborough**  
 Horse & Jockey  
**Epworth**  
 Old School Inn  
 Queen's Head  
 Red Lion  
 White Bear  
**Fenwick**  
 Baxter Arms **W**  
**Finningley**  
 Harvey Arms **W**  
**Fishlake**  
 Hare & Hounds  
**Goole**  
 Aire and Calder  
 City & County **LDT**  
 North Star Marina Club **LG**  
 Old George  
 The Viking  
 Tom Pudding **LCG**  
 Victoria Hotel  
**Great Heck**  
 Bay Horse **L**  
**Harlington**  
 The Harlington  
**Hatfield**  
 Bay Horse  
 Hatfields  
 Hatfield Chace  
 Ingram Arms  
 Jack Hawley at the Grange  
**DL**  
**Haxey**  
 Duke William  
 Kings Arms  
 The Loco

**Hickleton**  
 Hickleton Village Hall \* **WG**  
 Hooten Pagnall  
 1903  
**Kirk Sandall**  
 Glasshouse **DTG**  
**Kirk Smeaton**  
 Shoulder of Mutton  
**Mexborough**  
 Gorilla Beer Hall **LTGDW**  
 Imperial **LTG**  
 New Masons  
 Old Market Hall **LW**  
 Pastures Lodge  
 The Falcon **WD**  
**Micklebring**  
 The Grazing Harts  
**Norton**  
 Coronation Club **TGD**  
 The Royal Hotel  
**Owston**  
 Darios  
 Owston Hall & Golf Club  
**Owston Ferry**  
 Crooked Billet  
 White Hart  
**Pollington**  
 King's Head **L**  
**Rawcliffe**  
 Jemmy Hirst **LC**  
**Rawcliffe Bridge**  
 Rawcliffe Bridge Club\*  
**Rosington**  
 The Styrrup  
**Sandtoft**  
 Don Valley Brewery Tap **DLGT**  
 Reindeer **WTG**  
**Scawsby**  
 Scawsby Mill **DT**  
 Sun (Inn)  
**Snaith**  
 Bell & Crown  
 Black Lion  
 Brewer's Arms **L**  
 Manor House Bar  
 The Plough Inn **LD**

**Sprotbrough**  
 Boat Inn **W**  
 Ivanhoe **WT**  
**Sutton**  
 Anne Arms  
**Sykehouse**  
 Old George Inn  
**Thorne**  
 Barge Inn **G**  
 Canal Tavern  
 Punch Bowl **LTG**  
 The King's Chamber  
 Windmill **LGWD**  
**Tickhill**  
 Carpenter's Arms  
 Travellers Rest  
 Royal Oak  
 Scarbrough Arms **L**  
 Tickhill Cricket Club  
**Wadworth**  
 White Hart  
**West Butterwick**  
 Ferry Boat  
**West Cowick**  
 Ship **W**  
**Westwoodside**  
 Carpenter's Arms  
**Wheatley**  
 Strawberry Island Boat  
 Club \*(Private Club)  
 The House Martin  
**Wheatley Hills**  
 Wheatley Golf Club  
**Woodlands**  
 Woodlands Snooker Club

## Abbreviations

- L Locale registered
- D CAMRA discount available to members
- C Traditional ciders and perries served
- W Wheelchair access
- T Wheelchair access + toilets
- G Dogs allowed in all or part of the pub
- Pub/Club may have restricted opening times



Boat Inn,  
Sprotborough

Brewer's Arms, Snaith

Jenny Wren, Beal

Scarbrough Arms,  
Tickhill

Once known as the Spread Eagle, the single-storey building was enlarged and converted into a hotel in 1923. This explains why there is an eagle carving at the front of the building. In later life it had a brief spell as Joplins Wine Bar before it became the Tut 'n' Shive in 1992.

At this busy city centre pub, you will usually find a lively atmosphere. Up to 4 real ales served through handpumps with eye-level outlets to their swans' necks. Large screen TVs feature mainly sport. It can be found adjacent to the Frenchgate Shopping Centre and minutes from the Transport Interchange.

One of the staff, Liz, has worked there since 1996 and loves its quirky atmosphere. You will usually find at least 3 real ales available and there is CAMRA member discount available.



**try a taste of tradition**  
Farmers Ales from Bradfield Brewery

On-Site Brewery Shop open Monday – Saturday 10am until 4pm.  
Info@bradfieldbrewery.com • 0114 2851118 • www.bradfieldbrewery.com  
Bradfield Brewery Limited, Water House Farm, High Bradbols, Sheffield, S14 1D

Visit our page on Facebook or follow us on Twitter for the latest news and offers.

# hallcross

## doncaster CAMRA city pub of the year

good beer guide 2020/21/22/23/24/25

**Stocks** resurrected original brews & new specials. £3.00 All day everyday

3 regularly changing guest ales £3.50 a pint

takeaway and delivery service for all real ales.

5, 9, 18 and 36 pint boxes available

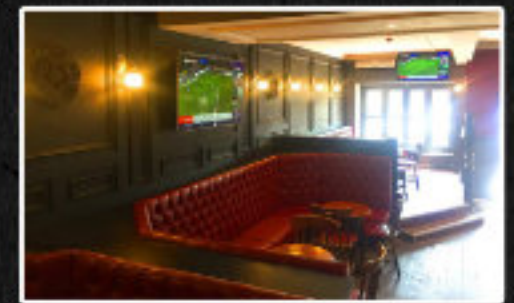
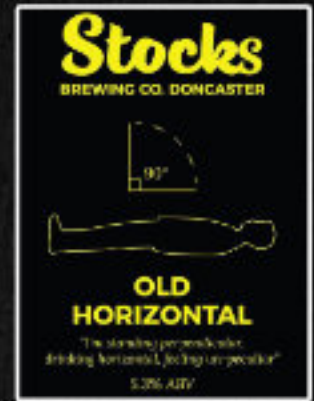
weekly quiz every Wednesday

patio beer garden - large walled outside area & large patio beer garden & area at the front

live sports inside and out.

functions / room hire & free meeting area

dogs welcome



open daily 33-34 hallgate, doncaster

crossfirebars@hotmail.com hallcrosspub and live music venue

# DONGAS



Your No.1 Choice for your Bottled Gases



- Rent free cellar gases
- A full range of CO2 & mixed gases
- A top level delivery service



- Doncaster's leading Calor Gas Supplier
- Full range of Propane, Butane & Patio Gases
- Free local delivery



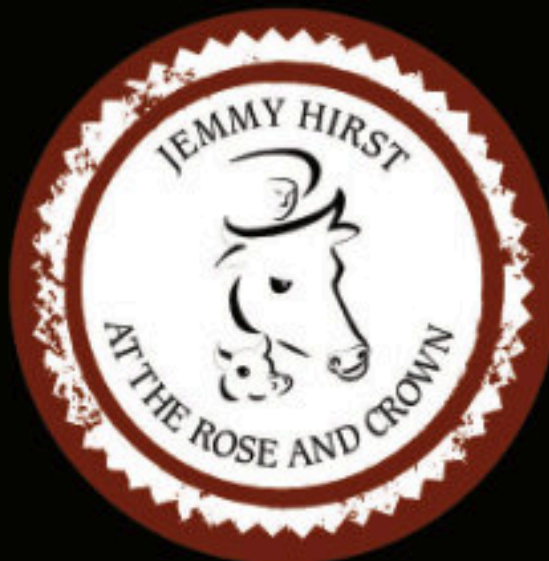
THE SPECIALIST IN GASES

- We are main stockists and distributor of Buse industrial gases
- Offering you a full range of industrial welding gases

Unit 7  
CHERRY TREE INDUSTRIAL ESTATE  
CHERRY TREE ROAD  
HEXTHORPE, DONCASTER  
SOUTH YORKSHIRE, DN4 0BJ

Tel: 01302 349100  
Web. [www.dongas.co.uk](http://www.dongas.co.uk)  
Email. [info@dongas.co.uk](mailto:info@dongas.co.uk)

## CAMRA DISTRICT PUB OF THE YEAR 2023 & 2024



# COME JOIN US AT THE JEMMY

Riverside, Rawcliffe DN14 8RN



**REAL ALE • CRAFT BEER • GIN • WINE • HOME-COOKED FOOD**

Contact Jill on 07501 997506 to learn more, book a table for dining or to explore booking your own events.

# War of the Roses Beer Festival

Steve Pynegar



Jill Taylor, at the Jemmy Hirst, recently had a beer festival in her pub themed on the War of the Roses. A good selection of beers from both Yorkshire and Lancashire were available. To add more interest she had 2 handpumps labelled A and B. Visitors to the festival were given samples of each one and asked to vote for there favourite.

We are pleased to report that the Yorkshire beer (Ossett Blonde) won in a very close race with the Lancashire beer (Robinsons Dizzy Blonde). Of course this was all a bit of fun and not a true taste test by experts but it added to the experience of visiting the beer festival. CAMRA members present can testify that both beers were in good condition.

**2 THREE B'S MICRO PUB 2**

Scarborough  
Bridlington  
Hull

Bridlington's Real Ale Destination

2 Marshall Avenue  
Bridlington YO15 2DS  
01262 604235

threebpubbrid.co.uk  
@ThreeBsPubBrid

**REAL ALES**

**REAL GIDERS**

30 SEATS & OUTDOOR SEATING

OPEN  
SUN 12-9:15 P  
MON - TUE 12-11  
WED - SAT 12-10:15 P

EVER-CHANGING RANGE OF ALES  
10 CIDERS  
LARGE GIN SELECTION

BAR SNACKS  
CHILDREN & DOGS WELCOME  
HOT & COLD SOFT DRINKS  
TAKEOUT AVAILABLE

TRIPADVISOR  
2024  
CHOICE AWARDS

CAMRA  
10% OFF CAMRA DISCOUNT

GOOD BEER GUIDE  
2024

## THE OLD BREWHOUSE CUSWORTH

### THE HOME OF 1086 BREWERY

CASK ALE • PIZZA & SNACKS • COFFEE • PRIVATE HIRE

Housed in the original brewhouse of Cusworth Hall, The Old Brewhouse serves ales direct from the 1086 Brewery, so you can enjoy a choice of IPA, Pale Ale or Bitter.

#### OUR RANGE

Our core range respects the heritage of our home



and can be enjoyed at discerning venues across the borough of Doncaster and Cusworth Brewhouse. All members of the family are welcome including the wee ones and the dog.

#### ORDER ONLINE FOR COLLECTION



Enjoy all your Brewhouse favourites in the comfort of your home. Place your order online and collect from the Brewhouse.

WE'RE ALSO ON deliveroo

#### OPENING HOURS

MONDAY	CLOSED FOR BREWING
TUESDAY	CLOSED FOR BREWING
WEDNESDAY	10AM - 9PM
THURSDAY	10AM - 9PM
FRIDAY	10AM - 11PM
SATURDAY	10AM - 11PM
SUNDAY	10AM - 9PM



CUSWORTH HALL DONCASTER DN5 7TU  
01302 639880



SAVE 5%  
WHEN YOU ORDER  
ON OUR APP



## Beer Tastes

Steve Pynegar

We have covered beer styles in a previous Donny Drinker but one of the key components that define a style is the taste. The science of taste is a difficult subject. Everyone has a tongue lined with taste buds which, in simple terms, control the impression of sweetness or bitterness of a food or drink.

Through evolution we all have an individual perception of what is sweet or bitter and the level of that taste. The world of wines and beers flourishes on this aspect of human life by providing a range of drinks to suit the whole of the taste spectrum so there is something for nearly everyone. Where does the taste come from?

It's the mix of ingredients within beer, the brewing process and the method of storage that all come together to give a beer its individual taste.

**Ingredients** – The basic ingredients are hops, malt and yeast. Beers are often described by the drinker as hoppy or malty, bitter or sweet although the sweetness is usually on the low side. The malt can influence the taste by making the beer have flavours such as toasty, nutty, sweet, chocolatey or a hint of caramel. Hops can make a beer bitter, citrusy, or having hints of tropical fruits. Hops have altered over the years with locally produced hops being more subtle while hops from places such as the USA and New Zealand are citrusy and bold. The type of yeast used can influence the fruitiness of a drink or how spicy it is. Lager yeasts are said to give a cleaner, crispier flavour.

**The Brewing Process** – Boiling, mashing and fermentation will have an impact on the final beer. Many brewers keep their recipes a secret. The quantities of products used, temperature of the brewing process and types of ingredients all need to be closely controlled to ensure consistency in taste.

**Water** – It's unbelievable to think that water, which makes up about 90% of beer, can have an affect on the beer. When a brewery closes and the beer is replicated in another distant location, regular drinkers of that beer can often be heard to say that the beer tastes differently. There is no scientific proof that this is correct but the drinker is always right! However, the science behind this suggests that it is the make-up of minerals within the water,

namely chloride, sulphates and calcium that will make a difference.

**Other Ingredients** – Brewers love to experiment and the addition of other substances, such as various fruits and flavoured substances, is always worth a try if successful. For instance, during Christmas it is not unusual to find a beer that has been brewed to release the flavour of eating Christmas Cake!

**Storage** – In times past beer was stored in wooden barrels. This method has virtually disappeared although there is a organisation called the Society for the Preservation of Beers from the Wood (spbw. beer). It is thought that as beer ages in a wooden vessel it allows extra flavours to develop.

### How do we get to define the taste of a particular beer?

Fortunately, it's not just left to a random drinker stood at the bar to produce tasting notes. This is where the world of beer and wine have forged a similar path. The wine world has professionals known as Sommeliers who have been trained and become highly skilled at using their nose and taste buds to define the taste of a wine. Sommeliers, or according to the dictionary they should be called Cicerones, do exist in the beer world. They have had their palates trained to give consistent results and undertook sensory education with regards to aroma, flavour, and appearance. They will have also developed a shared vocabulary when expressing their thoughts on a particular beer. Taste judges can also operate at different levels but they should have all, at least, been on a Beer Judge Certification Programme. This ensures consistency when professionally produced beer tasting notes are available and ensures that the beer drinker has detailed knowledge of what they are about to drink. They can be part of professional groups within a brewery or recognised as experienced beer enthusiasts who have undergone some training.

When a drinker rolls up to the bar in the pub he's not likely to be provided with detailed tasting notes of a beer that he or she has not had before. In most cases the pump clip will indicate the beer style, which will narrow the field down and usually the bar



staff will offer you a sample so your taste sensors allow you to find out if you like it.

Basic tasting notes are normally available at beer festivals and are a key factor in determining which of the many beers you are going to drink.

### In conclusion

It could be simply stated that beer taste is in the tongue of the drinker. Everyone knows if they like a beer or beer style or dislike every beer (They do exist). Only exploration can answer where you stand but hopefully this article will have shown you that, like the world of wine, there is a high level of sophistication involved in brewing. The skills of a brewer should not be underrated.



## Taste Warning

There are two possible flavours that can be tasted in beer which might indicate your pint needs to be taken back to the bar.

The most common unwanted flavour is that of vinegar. Acetobacter is a bacteria which converts alcohol into acetic acid. As the beer ages, once the cask has been opened, this bacteria will produce the taste of vinegar in the beer. It's a good sign that the cask needs changing.

Too high fermentation temperatures or exposure to oxygen can also produce unusual flavours such as distinctive sourness.

If you are drinking a fruit flavoured beer or one such as the seasonal Christmas beers that claim to taste like Christmas pudding, then don't complain if the taste is as described.

## CAMRA Beer Scoring

- 0  
No cask ale available
- 1  
Poor - Beer barely drinkable
- 2  
Average - Drinkable but not inspirational
- 3  
Good beer in good form
- 4  
Very Good - beer in excellent condition
- 5  
Perfect - A seasoned drinker will rarely score this.



# Discover Real Beer

FROM YOUR LOCAL BREWERY

- Award Winning Beers ✓
- Cask Marque Accredited ✓
- Rotating Cask Ales ✓
- Craft Beer Specialists ✓

IN ONE OF OUR  
UNIQUE PUBS  
NEAR YOU



Don Valley Brewery Tap 1  
Wool Market, Market Place  
DN1 1NG



Don Valley Brewery Tap 2  
Wool Market, Market Place  
DN1 1NG



Don Valley Brewery Tap 3  
The Brewery, Belton Road  
Sandtoft, DN8 5SX



The Cadeby Inn  
Main Steet, Cadeby  
DN5 7SW



Coach & Horses  
High Street, Barnburgh  
DN5 7EP



The Plough Inn  
Shearburn Terrace, Snaith  
DN14 9JJ

Food served daily  
Live Sports  
Families Welcome  
Dog Friendly



Follow us  
@donvalleybrew



Discover  
Explore  
Shop  
Simply Scan here

## JACK HAWLEY at the GRANGE

NAMED AFTER THE HATFIELD ECCENTRIC OF 1828

REAL ALE & GIN BAR



ROTATING REAL GUEST ALES  
TIMOTHY TAYLOR'S & HOFMEISTER LAGER

LOCAL REAL CIDER, 50 PLUS GINS, WINES & SPIRITS



Welcoming • Quiet • Comfortable • Friendly Atmosphere

MONDAY to FRIDAY - 5pm to 11pm

SATURDAY & SUNDAY - 1pm to 11pm

Doncaster & District CAMRA  
Pub of the Season - Autumn 2019  
Pub of the Season - Summer 2023

Doncaster & District CAMRA  
Pub of the Year - 2020 Joint Winner



Live music, last Sunday of every month



10p off for members

The Grange, Manor Road, Hatfield DN7 6SB

facebook jackhawleyatthegrange | Telephone: 07769 927603

## Darleys Brewery - Thorne

Steve Pynegar

If you walk along King Street in Thorne you can't fail to notice a tall brick structure next to a metal gate with the name Darley's Brewery on it.

Unfortunately, it is all that remains of a well-known brewery that was once a significant business in the area with connections to many pubs in Yorkshire. The rest of the buildings which stood at the back of the entrance have been replaced with a modern supermarket.

William Darley, born in 1827, was a local man who conceived the idea of setting up the brewery. The exact date seems to have been lost in history but could have been around 1850. He died in 1892 and his son, who had taken a great interest in the brewery, inherited it. His son was keen to expand the business and under his leadership the chimney and tall water tower were built. A new source of water had to be found to accommodate the ever-increasing production of beer. Members of the family remained in directorship or senior management roles until it was sold.



*The sad remains of the gated entrance to the once proud brewery. Wouldn't it be nice if it could be restored as a mark of Thorne's heritage.*



References to Darleys Brewery travelled far and wide. The photo above was taken by the author whilst visiting a large shopping centre in Vienna. It was hanging on the wall in a cafe.

If you have a brewery, then owning a few pubs to sell the beer in is usually what follows, and with Darley's this is what they did over the years. Some of the pubs that are familiar to our readers today included the New Inn (Stainforth), Bay Horse, Chace, Green Tree in Hatfield, and the Crooked Billet and Red Lion in Owston Ferry. The total list of pubs was much greater than this and one exists with 90 pubs on it. There were pubs in South Yorkshire (23), East Yorkshire (29), North Yorkshire (3), West Yorkshire (23) and Lincolnshire/ Nottinghamshire (12). Some of the significant homes they once lived in locally are Cantley Hall and Skellow Hall.

Another business that they were associated with was Milnthorpe's Malting House in Barnby Dun.

Eventually the business followed the path of many of our historical breweries. They were taken over by the much bigger Vaux Breweries of Sunderland in October 1978. The final fate of Darley's Brewery came in May 1986 when closure was announced and the building finally closed the following September.

## Spotlight on the Carpenter's Arms - Westwoodside

Dave Bartley

"You can see from the display how many cask ales we've featured so far". That's a quote from Marc Roberts when asked about real ale provision since he took over at the Carpenters Arms in Westwoodside. The answer, judging from the impressive range of beer mats above the bar, is at least 40 and that's not counting the three on offer when I visited the pub to research this article.

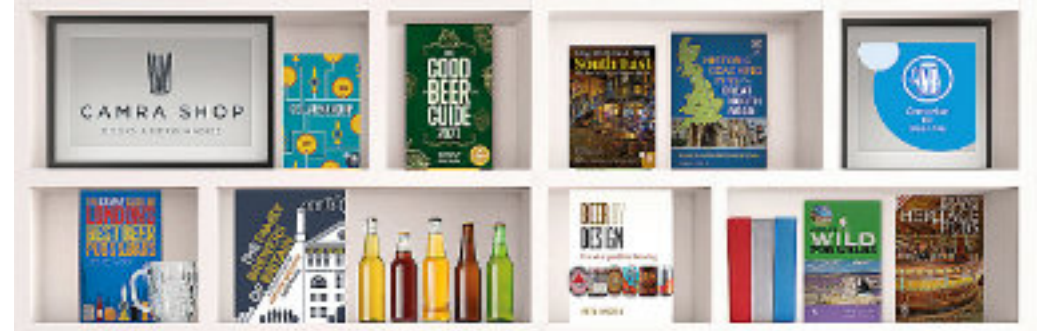
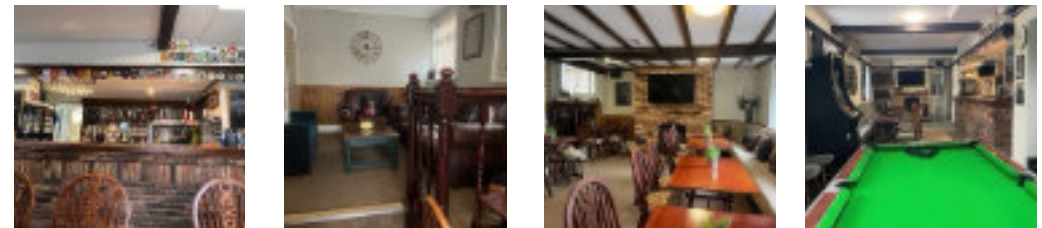
All this is good news for a pub which has long been one of my favourites. Under previous licensees "the Carps" won several CAMRA awards and featured every year in the Good Beer Guide. In recent times, although cask ale was always available, the range was limited. But, since Marc took over the leasehold on May 1st this year, things have changed. Two cask ales are on offer in the bar and a third handpump has been installed in the lounge. The new range aims to cater for all tastes: "I try to make sure we have a bitter, a light beer and a dark one" is Marc's intention. The beers in question on my visit were Tetley's Original Bitter, Wensleydale Halt The Eclipse and Theakston Poltergeist.

Marc is no stranger to Isle of Axholme pubs. In the past he's been in charge at the Duke William and

the Kings Arms in nearby Haxey. He has also run pubs in Nottinghamshire as well as working further afield in London and Spain. Since taking over in Westwoodside he has overseen some changes in the pub's interior. The new snug in the far corner of the refurbished lounge is proving very popular.

"The Carps" is easy to find, situated on the B1396 in the centre of the village. It has always played its part in the community life of the village, often raising impressive amounts for local charities. Among other things, it's the hub for the recently-formed Isle of Axholme branch of Doncaster Rovers Supporters Club. Tuesday hosts an always well-attended Quiz Night. The pub holds an Open Mic Night on the second Sunday of the month and live entertainment some Fridays. Unusually for a rural pub, it doesn't do meals although pop-up vans are usually around at weekends.

The pub is open from 3:00 Monday-Friday and from 12:00 at weekends. Closing times vary depending on custom and circumstances. But if you want to see this pub at its best then visit on Friday teatime when it has a real buzz. It's great to see this pub doing what it has always done best. Who knows? It may even return to the Good Beer Guide.



## Final Anniversary Review

### Donny Drinker

It didn't take long before the branch, and many CAMRA branches in the country, realised that they need a vehicle to communicate with the local drinkers. The end result was the creation of the Donny Drinker magazine, which could be distributed to pubs and branch members.

Some of our long-standing members can remember the early days when home computers were unheard of and desktop publishing software had yet to be made available. We must give thanks to the early pioneers of Donny Drinker who used letraset, hand-drawn cartoons and primitive adverts to prepare those early issues. Cut and pasting had a whole new meaning to the digital cut and pasting that is used today in modern desktop publishing software. The modern methods bring with them their own problems as they need a good level of expertise but without them we could not produce the magazine we see today.

In the beginning, once the cutting and pasting had been done, they were given to a printer who could provide the magic to make the joins disappear.

Eventually, the front page consisted of a photo of the pub that had won Pub of the Season with a hint of what stories could be found inside. The pioneers moved on to typing the reports and then early forms of desktop publishing software were used until we get to the stage when highly sophisticated software,



for both laying out the issue and managing the photos, is being used. Pubs of the Season were a main focus of the front page until 2017 when a miscellany of photos related to the pub and brewing industry were used.

Today we normally have 3,000 copies printed unless there is a special event such as a beer festival, when more are printed. We rely entirely on our advertisers to fund the magazine and are always on the look-out for new ones.

These magazines are now a gold mine of historical information about the branch, our pubs and breweries. A classical example of this is shown from the 7<sup>th</sup> issue of Donny Drinker when the writer, Alan Walker, reflected on the first 10 years of the branch.

*'Characters have come and gone, both in the branch and the local pubs. Good friends like John and Loui' at the Bay Horse, Bob and Mrs Bean at the Crown and Fred and Mavis at the 'Taps have left us but a wealth of friendly landlords and their good ladies remain. It's hard to forecast what will happen in the next decade but one thing is certain : the price of your pint, be it smooth and flavoursome or cold and fizzy, will keep going up in price. In 1974 a pint of ale cost around 18p; in 1984 it's over 60p in most pubs. I reckon that by 1994 a round down the local will definitely be a cheque book job.'*

Today communication with members and the general public has moved on. Together with the magazine we now have modern social media available to us as well as our own website. While ever there is real ale, pubs, breweries and CAMRA we will always have something to say.

### Socials

It didn't take much thinking to work out that pubs were a place to socialise with members and the general public so, in the very early days, trips to breweries and the few pubs that served real ale at that time were organised. It was very much reliant on public transport, which was better then, and members who had got a car.

In 1984 a social was organised around the Thorne area. It required catching the first bus into town at

7pm and getting back to town at about 10.45pm. In total there were 5 different bus journeys. This left time to catch the last buses home, if required. The total cost in bus fares was 11 shillings (55p in new money).

All of the pubs they visited no longer exist. They included the Abbey at Dunscroft, the Corner Pin and Green Dragon at Thorne, and the Robin Hood and Little John at Hatfield Woodhouse. There was an option to drop off a bus and visit the Ridge Wood at Edenthorpe, a pub which is currently closed.

Today's socials still sometimes use public transport but it is not as easy to manage as in 1984. For travelling about our branch area for socials we often hire a small coach to take us to the pubs or brewery taps. Recently a social visited pubs at Great Heck, Beal, Rawcliffe and Snaith. It was a great chance for members to go to pubs they may never have been to and, perhaps, never even heard of. Another social visited 5 pubs to the south of Sheffield.

### Charity Fund Raising

Over many years the branch raised money by various means for good causes. Below are photos taken at the time of an event or presentation.



Sometimes socials combine with a branch presentation or a pub/brewery beer festival.

They are usually well attended, are a chance to get to know members and might even involve a little sing-along. For more sedate socials there are always ones based in the city centre. These visits may be to a wide range of pubs in the city, just a few in part of the city or to a pub holding a beer festival.

There are many advantages to being a CAMRA member but one of the main ones is the social life that can be enjoyed. Often they are in surroundings that may be new to you and sometimes it is a chance to go back to a favourite pub or a favourite beer you can't get anywhere else.

We must also give our thanks to the various social secretaries we have had over the years. It can be a time-consuming responsibility. It includes liaising with pub managers and branch officials to organise the many presentations we do.

## How to access and use the replacement for Whatpub

Dave Sanderson

Following on from the closure of the Whatpub website and the Good Beer Guide app, these are some links to help with the new pubs & clubs section on the Camra website.

To visit the pub pages on the website go to: [camra.org.uk/pubs](http://camra.org.uk/pubs)

Non-CAMRA members can gain access to most of the information but some parts, such as entering beer scores can only be done by members. In the top right hand corner of the screen (desktop) is a button to sign in for all Camra members. This will give additional information that is accessible to Camra members only.

On a mobile device this can be accessed by the account button at the bottom of the screen.

The search bar can be used to search for either a specific pub or club, or to search by location name, postcode, or general postcode area (e.g. DN1). If your device has location active, it can also search for nearby pubs.

There are two main screens : the search screen and the page for each pub and club entry. On the search screen enter which pub or area that is required. This will bring up a list of pubs that match the search criteria. This defaults to all open pubs. On the left side of the desktop screen there is a list of filters which can be used to filter only real ale pubs, GBG pubs, gardens, live music and others. There is also the option to show closed pubs. On mobile devices the filter button is to the right of the search window.

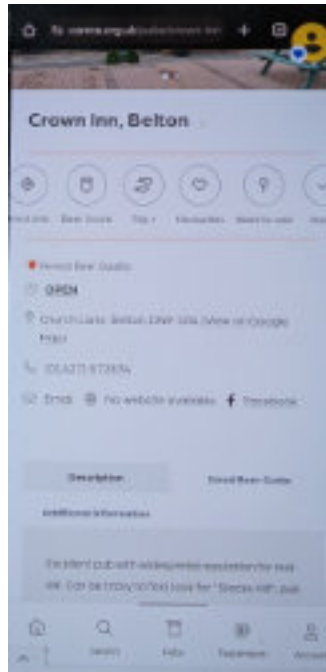
The pub and club display screen gives many details about the pub. At the top of the screen is the pub name, address, links to their own website and Facebook page, telephone number and a link to Google Maps to assist in finding the pub. There are photos of the pub where these are available.

Going down the screen there is more information about the pub, including descriptions and opening times.

This is followed by links to adjacent pubs and recently-viewed pubs.

To assist Camra in keeping the database up to date, there is the Suggest an Edit button. This links to an edit screen where any additional information can be added or amended information highlighted. This includes an upload facility for any additional photos. This will generate an email to the local branch pubs team who will then update the entry accordingly.

For Camra members only there is also a Beer Score button. This allows the quality of the beer to be scored. This assists the branch in knowing where the beer is well kept. The data can then be used to check pubs that are nominated for Good Beer Guide entry or for local Camra awards. Note that these scores are for the condition the beer is served and not for personal preference to the style of beer. To access a list of pub visits and scores, click on your account button at the top of the screen and select My Beer Scores. This displays a complete list of your inputted scores.



Partial view on a mobile



District Summer Pub of the Season  
The Crooked Billet - Owston Ferry



District Autumn Pub of the Season  
The Hilltop - Conisbrough



# Campaigning *for you*

Real ale *is just the start...*

We support everything from **pubs, clubs and drinkers' rights**, to licensees and **breweries**, the list is endless. United in **the story** we all love, our **great tradition**.

So why not join us?

Save on beer when you visit the pub with our voucher and discount schemes. Plus save on entry to 100s of beer festivals too, just a few perks of our CAMRA membership.

Make our story part of yours.  
Join at [camra.org.uk/join](http://camra.org.uk/join)



Real stories, real people, real ale

